

No. 313

Replaces New Product
Bulletin # 311

Date 01/07/03

Another addition to the expanding line of Webb products.

NEW PRODUCT BULLETIN

Part Number: 4520 "PLATINUM SERIES" ALUMINUM HUB

DESCRIPTION:

10 Stud Hub - 11.25" (285.75mm) Bolt Circle
Uses Outboard Drum - (M22 x 1.5) Serrated Stud

AVAILABLE
NOW

WEBB AXLE GROUP 11

OUTER BEARING CUP 3720 ←
CONE 3782 ← Cup Code 1
INNER BEARING CUP HM212011 ←
CONE HM212047 or
HM212049

WEIGHT:

24 lbs. Hub Only
34 lbs. Hub, Cups and Studs

Hub Dynamic Capacity: 7300 lbs.

APPLICATION INFORMATION
TRUCK STEERING AXLE

Drawing Reference	Item	Dimension
B	Overall Length	7.27
C	Outer Hub Cap Face to Inner Cup Seat	4.44
D	Distance Between Cups	3.38
E	Inner Cup to Mounting Face	
	Drum with (0.25 Back Plate Thickness)	5.69
	Drum with (0.50 Back Plate Thickness)	5.94
	Drum with (0.62 Back Plate Thickness)	6.06
F	Bolt Circle Diameter	11.25" (285.75mm)
G	Wheel Stud Qty./Thread Diameter	(10) M22x1.5
H	Hub Cap Hole Pattern	6 Holes 0.31 Dia. 4.50 Dia. Bolt Circle

WEBB AXLE GROUP 11

Dana Spicer.....I-100, I-120, I-140, W15
Eaton.....EFA-12F3, EFA-12F4, EFA-13F4
Rockwell.....FF-931, FF-941, FF-942, FF-943,
FF-944, FF-961, FG-931, FG-900, FG-941, FG-943
Westport.....F0W-1300, F3W-1200/1300,
F3W-1400, F5W-1200, F5W-1200/1300, F6W-1400,
F6W-1400WT

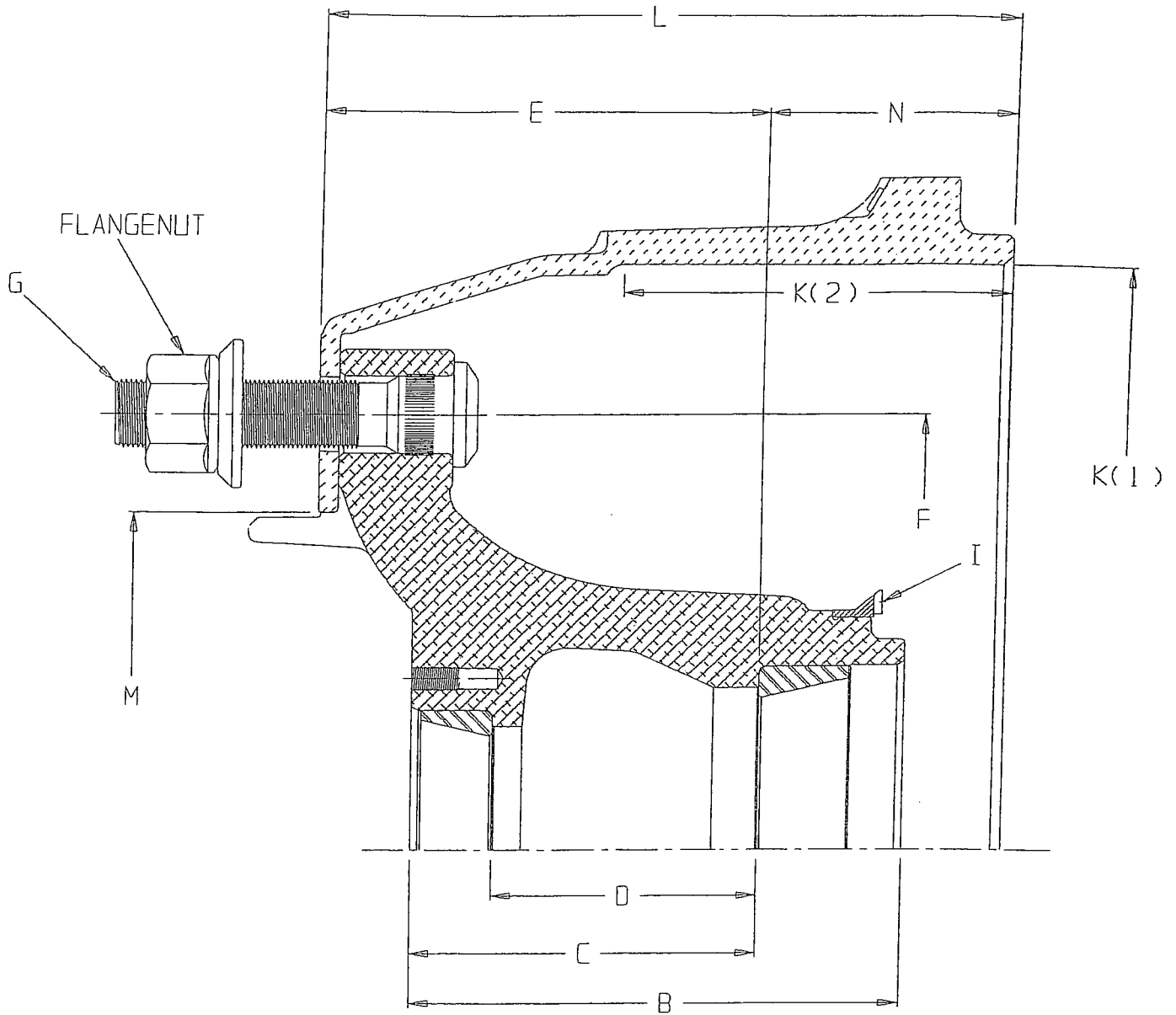
I. ABS RING

Part Number: 51052
Pitch Diameter: 6.46
Cup Seat to Face Dimension: 1.53

BRAKE DRUM INFORMATION

J		Estimated Drum Weight	Special Information	K		L	M	N
Order Code	Balanced			(1) Dia.	(2) Width	Drum Overall Depth	Drum Pilot Dia.	Cup to End of Drum
60545B	ZX	46	Platinum Drum (0.25 Back Plate Thickness)	15.00	4.00	8.79	8.78	3.10
65545B	RX	78	0.50 Back Plate Thickness	15.00	4.00	9.04	8.78	3.10
65153B	RT	82	0.50 Back Plate Thickness	15.00	5.00	9.31	8.78	3.37
65163B	GS	124	0.62 Back Plate Thickness	16.50	5.00	9.52	8.78	3.46
65179B	KR	110	0.50 Back Plate Thickness	16.50	6.00	9.84	8.78	3.90

WEBB WHEEL PRODUCTS, INC.
2310 Industrial Drive, S.W.
Cullman, Alabama 35055
(256) 739-6660 FAX (256) 739-6246



ASSEMBLY DRAWING

List of Components			
Item	Part No.	Description	Qty.
1	4520	Hub, 10 Stud, Outboard	1
2	3720, HM212011	Bearing Cups	1 ea
3	101161	Serrated Stud M22 x 4.32	10
4	179935	Flangenut M22 x 1.5	10
5	60545B	Brake Drum 16.5 x 5	1