

NEW PRODUCT BULLETIN

SPOKE WHEEL SPECIFICATIONS

Part No. **2524**

DESCRIPTION: 10 Stud Hub w/ 11.25 Dia. Bolt Circle
Uses Outboard Drum - Serrated Stud

TRUCK STEERING AXLE APPLICATIONS WEBB AXLE GROUP #11

Bearing Information (Webb Axle Group # 11)

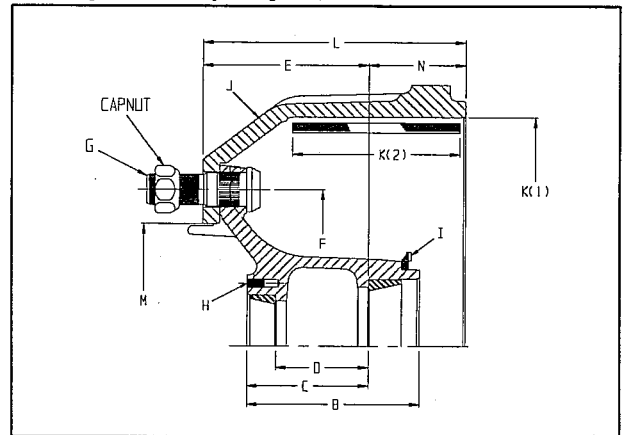
Dana Spicer.....I-100, I-120, I-140, W15
Eaton.....EFA-12F3, EFA-12F4, EFA-13F4
Meritor.....FF-931, FF-941, FF-942, FF-943, FF-944
.....FF-961, FG-900, FG-931, FG-941, FG-943
Westport.....F3W-11200, F3W-1400, F6W-1200
.....F6W-1400

Outer Bearing Cup 3720 ←
Cone 3782 ← Cup Code 1
Inner Bearing Cup HM212011 ←
Cone HM212047 or
HM212049 or
HM212049X

Specification Information

Drawing Reference	Item	Dimension
B	Overall Length	6.26
C	Outer Hub Cap Face to Inner Brg. Cup Seat	4.43
D	Distance Between Cups	3.38
E	Inner Cup to Mounting face	
	Cast Drum .50 Flange Thickness	5.94
	Cast Drum .62 Flange Thickness	6.06
F	Bolt Circle Diameter	11.25
G	Wheel Stud Qty./Thread Diameter	(10) 1 1/8 Thread
H	Hub Cap Hole Pattern	6 holes 0.31Dia. 4.5 Dia. Bolt Cir.

Hub Dynamic Capacity: 7,300 lbs



Assembly Drawing

I. ABS RING (See Options Available for Order Code)

Part Number: 51053
Pitch Diameter: 6.46
Cup Seat to Face Dimension: 1.53

Brake Drum Information Drawing Reference

L Brake Drum		Special Information	M	N	O	P	Q
Part No.	Order Code		Brake Size (1) Dia. (2) Width		Drum Overall Depth	Drum Pilot Dia.	Cup to End of Drum
65548B	LT	.50 Thick Flange	15.00	4.00	9.04	8.78	3.10
65182B	LD	.62 Thick Flange	16.50	5.00	9.52	8.78	3.46
65172B	LS	.50 Thick Flange	16.50	6.00	9.84	8.78	3.90

Wheel Fastener Information

Disc Wheel	Tire App.	Drum Type	Stud (RH)	Color	Stud (LH)	Color	LH Cap Nuts		RH Cap Nuts		Stud Stand Out	Cap Nuts Order Code	
							Inner	Outer	Inner	Outer		With	Less
Steel/Alum	Single	Cast (.62)	100170	Silver	100181	Yellow		178910		178921	2.15	K	P
Steel	Single	Cast (.62)	188108	Silver	188109	Yellow		178910		178921	1.63	L	R
Steel/Alum	Single	Cast (.50)	100170	Silver	100181	Yellow		178910		178921	2.03	K	P
Steel	Single	Cast (.50)	188108	Silver	188109	Yellow		178910		178921	1.51	L	R

OPTIONS AVAILABLE

ORDER CODE	DESCRIPTION	PART NO.
T	ABS RING	51053

WEBB WHEEL PRODUCTS, INC.
2310 Industrial Drive, S.W.
Cullman, Alabama 35055
256/739-6660
FAX: 256/739-6246