

Another addition to the expanding line of Webb products.

NEW PRODUCT BULLETIN

PART NUMBER: **5682**

SPOKE WHEEL

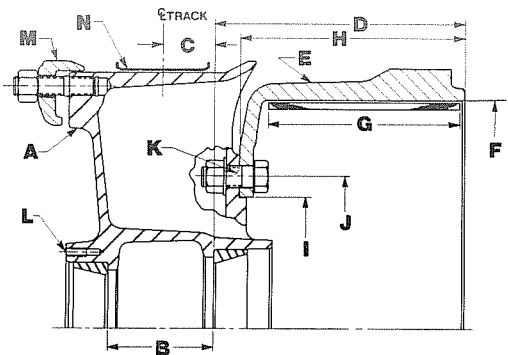
DESCRIPTION: **6 Spoke - 22 Inch**

AVAILABLE
SEPTEMBER, 1985

ESTIMATED WEIGHT: **94 Lbs.**
(Wheel Only)

APPLICATION INFORMATION
TRAILER AXLE

PRODUCT INFORMATION



WEBB AXLE GROUP

- Outer Bearing Cup HM518410
- Outer Bearing Cone HM518445
- Inner Bearing Cup HM518410
- Inner Bearing Cone HM518445

AXLE MODELS

- FRUEHAUF
- PRO-PAR
- ROCKWELL
- TP

"A" Wheel Part No.	Desc.	"B" Between Cups	"C" Cup to Cup Track	"D" Cup to End of Drum	"E" Brake Drum		"F" Brake Size		"H" Drum Over All Width	"I" Pilot Dia	"J" Bolt Circle Dia.	"K" Bolt Qty. Dia.	"L" Hub Cap Hole Pattern	"M" Rim Clamp	"N" Rim Spacer Width	Grease Slinger Dirt Guard	Hub Cap Kit Drum Bolt Kit
					Part No.	Order Code	Dia.	Width									
5682	6 Spoke 22"	4.50	2.56	8.19	61597	AN	15.00	7.00	8.12	9.50	11.25	6	6.25 8 Thds.	16123 16124 16129	4.00 3.38 3.62	Not Avail.	Not Avail.
				8.31	68665	HA	16.50	6.00	8.25								
				8.75	M67415	QH ²	16.50	7.00	8.69								
				8.81	68765	HD	16.50	7.00	8.75								
				8.81	68565	MD	16.50	7.00	8.75								
10.25	68931	HP	16.50	8.62	10.19											90320	

THIS BULLETIN IS DESIGNED SO THAT IT CAN BE INSERTED INTO SECTION 2 OF OUR CURRENT SPOKE WHEEL AND HUB CATALOG TBTW384 (SEE REVERSE SIDE FOR INTERCHANGE INFORMATION)

NOTE 2. CENTRIFUSE BRAKE DRUM

WEBB DIVISION
A division of Marmon Industries, Inc.
2310 Industrial Drive, S.W.
Cullman, Alabama 35055
(205) 739-6660

INTERCHANGE INFORMATION

**This Product Is Not Offered
By Any Other Manufacturer.**

INTERCHANGE INFORMATION SHOWN IS BASED ON INFORMATION AVAILABLE AT TIME OF PUBLICATION, PORTIONS OF WHICH WERE OBTAINED FROM UNCONFIRMED SOURCES. THEREFORE ACCURACY OF INTERCHANGE INFORMATION CANNOT BE ASSURED.