

Another addition to the expanding line of Webb products.

NEW PRODUCT BULLETIN

PART NUMBER: 2628 HUB

**DESCRIPTION: 8 Stud Hub
(10.827 / 275mm Bolt Circle)**

AVAILABLE
AUGUST, 1985

ESTIMATED WEIGHT: 58 lbs.

APPLICATION INFORMATION
TRUCK DRIVE AXLE

FEATURES:

- Designed for Pilot Mount Wheels
- Utilizes Two Piece Flange Nut System
- Because of Clamping Force Provided by Flange Nut System All Assemblies are Furnished for Right Hand Threaded Flange Nuts.
- Design of Hub Eliminates Need for Inner Cap Nuts, Allowing for Easier Service Due to Fewer Attaching Parts.
- Designed for Outboard Mount Brake Drums.
- Various Drum/Wheel Combinations Are Obtainable with Different Stud Lengths (See Assembly Print on Reverse Side).

WEBB AXLE GROUP #21

OUTER BEARING CUP 572
 CONE 580
 INNER BEARING CUP 592A
 CONE 598A or 594A

AXLE MODELS

EATON 18, 23, 26, 38D, D380, D381, D400, 44D
 (Trailer Axles) H25LD, 25LD
 ROCKWELL R170, SRD, SQ100, SQHP, SR170
 (Trailer Axle) TR

"A" Hub Part No.	Desc.	"B"	"C"	"D"	"E"		"F"		"G"	"H"	"I"	"J"	"K"	"L"	Stud Stand Out
		Between Cups	Cup To Mtg Face	Cup To End of Drum	Brake Drum		Brake Size		Drum Over All Width	Pilot Dia.	Bolt Circle	Bolt Qty	Drive Stud Pattern		
					Part No.	Order Code	Dia.	Width					Dia		
2628	8 Stud 10.827 BC OB Drum	4.31	1.81	8.78 8.81	61576B 66875B	RE RF	15.00 16.50	7.00 7.00	10.59 10.62	9.00 9.00	10.827 10.827	8	8 Stds .62Ø 7.00Ø B.C.	★	
												22 MM			

This Bulletin is Designed So That It Can Be Inserted Into Section 3 of Our Current Spoke Wheel and Hub Catalog TBTW384.

NOTE: Due to the Recent Development of This Style Hub There is No Interchange Information Available.

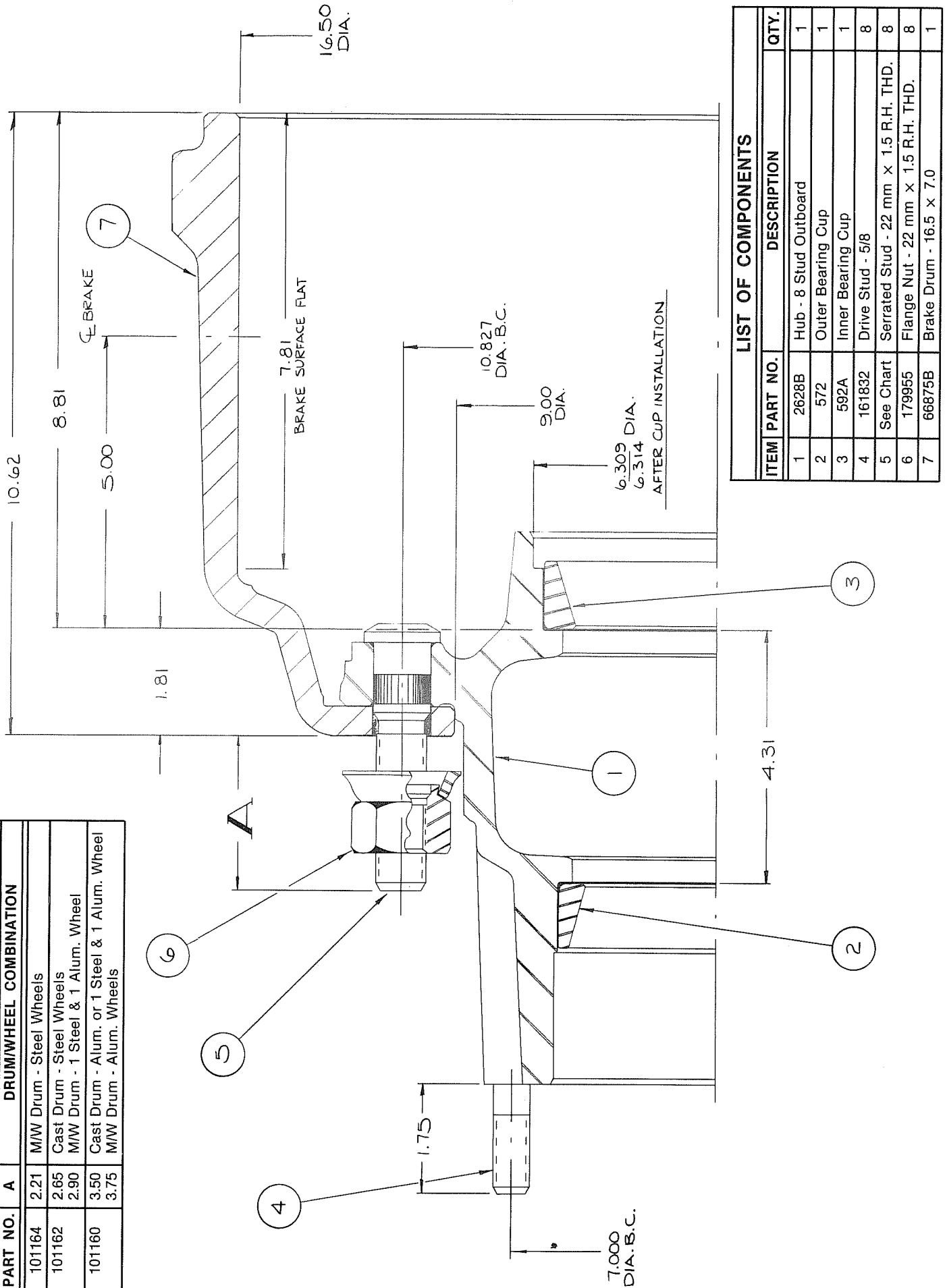
★ See Reverse Side for Sample Assembly Print Showing All Major Components and Stud Application Chart.



WEBB DIVISION

A division of Marmon Industries, Inc.
 2310 Industrial Drive, S.W.
 Cullman, Alabama 35055
 (205) 739-6660

STUD APPLICATION CHART		
PART NO.	A	DRUM/WHEEL COMBINATION
101164	2.21	M/W Drum - Steel Wheels
101162	2.65	Cast Drum - Steel Wheels
	2.90	M/W Drum - 1 Steel & 1 Alum. Wheel
101160	3.50	Cast Drum - Alum. or 1 Steel & 1 Alum. Wheel
	3.75	M/W Drum - Alum. Wheels



LIST OF COMPONENTS			
ITEM	PART NO.	DESCRIPTION	QTY.
1	2628B	Hub - 8 Stud Outboard	1
2	572	Outer Bearing Cup	1
3	592A	Inner Bearing Cup	1
4	161832	Drive Stud - 5/8	8
5	See Chart	Serrated Stud - 22 mm x 1.5 R.H. THD.	8
6	179955	Flange Nut - 22 mm x 1.5 R.H. THD.	8
7	66875B	Brake Drum - 16.5 x 7.0	1