



# SERVICE BULLETIN # 59

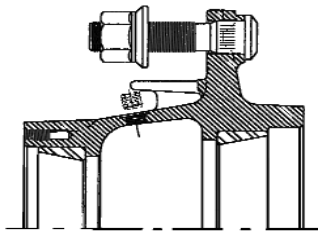
## (Updated)

6/1/05

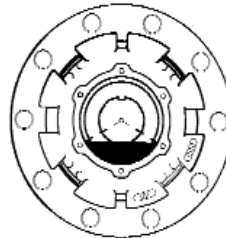
## Trailer Hub Lubrication Volume

Webb Wheel Products endorses the TMC Recommended Practice RP 631A “Recommendations for Wheel End Lubrication.”

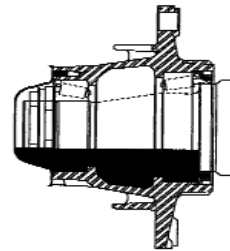
Webb offers an optional lubrication fill plug for most popular part numbers that may be specified with a “-71” suffix to the assembly code (See Figure 1). The amount of lubrication required will vary depending on the hub-cap, seal, and lubrication manufacturer’s recommendations.



Optional fill hole  
Figure 1



4 o'clock to 8 o'clock oil fill volume  
Figure 2



### Oil Lubrication:

The oil lubrication volume is the amount of oil lubrication required to fill the hub cavity to the “Oil Fill” line on the hub cap, or to the “4 o'clock and 8 o'clock” level on the outer bearing rollers (See Figure 2). The actual lubrication volume used should be verified and adjusted for the specific components used.

### Grease Lubrication:

The grease volume is the amount of grease lubrication required for the below listed hubs. The actual lubrication volume used should be verified and adjusted for the specific components used.

	Tapered Spindle 2023 Hub		Parallel Spindle 2343 Hub	
	Oil Volume	Grease Volume	Oil Volume	Grease Volume
Pints	1.1	2.5	1.6	3.2
Ounces	17.0	38.6	25.0	50.0
Liters	0.50	1.14	0.75	1.5

If you have any questions regarding this change, please contact us at the address or phone number shown on this bulletin or at [sales@webbwheel.com](mailto:sales@webbwheel.com).

Webb Wheel Products, Inc • Phone 256.739.6660 • Fax 256.739.6246 • Email [sales@webbwheel.com](mailto:sales@webbwheel.com)