

Meet the new “W Brake”^{*} standard for Transit Bus and Motor Coach



63115B

Optimized for transit applications



Vent windows for heat and friction residue release

Designed for improved drum durability in applications with frequent duty cycles

High performance material and quality machining

Introducing the **NEW advanced technology** Webb 63115B

- Machined from the same premium material as the well-established Webb 64115B brake drum
- Advanced engineering for optimized performance and durability in transit applications
- Made in the USA and backed by the best warranty in the business
- Your Webb expert can help you choose the right drum for your bus or motor coach application

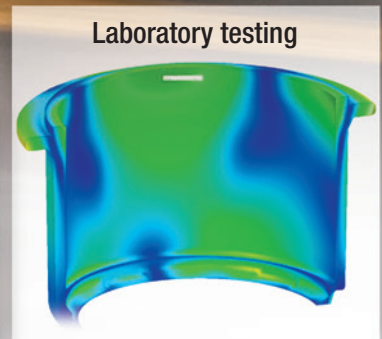
Part Number	63115B
Mount:	Outboard
Brake surface diameter:	14.5"
Overall depth:	12.81"
Brake surface (flat):	10.5"
Inner pilot diameter:	12.75"
Bolt circle diameter:	11.25"
Bolt holes (quantity):	10
Bolt holes (size):	1.31"

* “W Brake” is a Meritor® brake type used here for description purposes only.



Field testing

Accumulated data gathered in “real world” field testing was used to optimize the design for transit applications.



Laboratory testing

The Webb Engineering Team achieved this advanced design working closely with customers through five years of R&D employing computer aided design, finite element analysis, laboratory dynamometer testing, electronic monitoring, duty cycle data accumulation and extensive “real world” field testing.

Made in the USA



www.webbwheel.com

Contact your local Webb Wheel Products supplier for training that can cut your operating costs!

Scan this QR code to get certified on brake drum selection and wheel-end installation, and we'll send a token of our appreciation.



A Marmon Highway Technologies®/Berkshire Hathaway Company

©2016 Webb Wheel Products Inc.
April 2016 • SD-127-R7