



NEW PRODUCT BULLETIN

No. 292

Part Number: **2009**

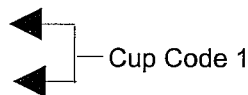
DESCRIPTION: ADI HUB (Austempered Ductile Iron)

10 Stud Hub - 11.25" (285.75mm) Bolt Circle
Uses Outboard Drum - Serrated Stud

WEIGHT: 32 lbs.

WEBB AXLE GROUP NO. 2

OUTER BEARING CUP HM212011
CONE HM212049
INNER BEARING CUP HM218210
CONE HM218248



**TRAILER AXLE APPLICATIONS
WEBB AXLE GROUP 2**

Dana Spicer.....D-22, K-22
Dexter.....D200K, D225K
Eaton.....HJ, HJE, J, JE, JH, 23L, 23R, 25R
.....HR25, 225D, 225J
Ingersoll.....A22H, A22S, A22T, DC22H, F22
Meritor.....RN, RQ, TKN, TN, TQ, TQC, TQD
Standard Forge.....A-22H, A-22S, A-22T
KB.....KBW, KBS
Westport.....F3W-1600, F3W-1800, F6W-1600

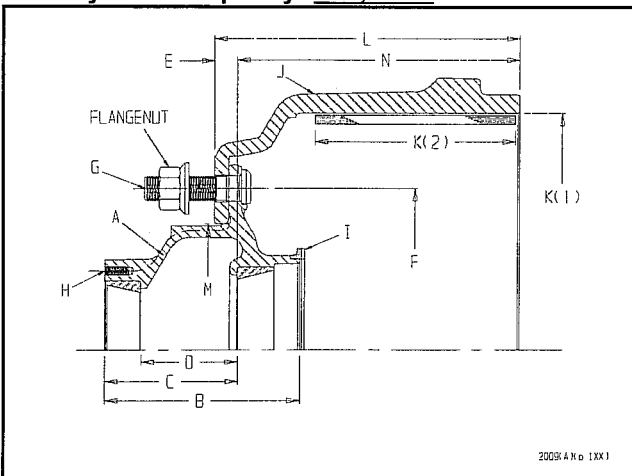
Features:

- Designed for Pilot Mount or Ball Seat Mount Disc Wheels.
- Hubs are only available as Service Assemblies (Hub with Bearing Cups and Studs Installed) or as Complete Assemblies (Service Assembly with Drum and with or without Flange Nuts or Inner and Outer Capnuts)

- Designed for Outboard Mount Brake Drums
- Comparable in weight to Aluminum Hubs.
- Standard Steel Hub Maintenance Procedures.
- Various Drum/Disc Wheel Combinations are available with different stud lengths available.

Hub Dynamic Capacity: 11,250 lbs.

Drawing Reference	Item	Dimension
B	Overall Length	6.79
C	Outer Hub cap Face to Inner Cup Sea	4.61
D	Distance Between Cups	3.35
E	Inner Cup to Mounting Face	
	Cast Drum (0.50 Back Plate Thickness)	0.78
	Centrifuse Drum (0.25 Back Plate Thickness)	0.53
F	Bolt Circle Diameter	11.25"(285.75mm)
G	Wheel Stud Qty. /Thread Diameter	10(3/4-16 or M22x1.5)
H	Hub Cap Hole Pattern	6 Holes 0.31 Dia. 5.50 Dia. Bolt Circle



Assembly Drawing

I. ABS Ring - Optional

Part No.	J Brake Drum Order Code Balanced	Special Information	K		L	M	N
			Brake Size (1) Dia.	(2) Width	Drum Overall Depth	Drum Pilot Dia.	Cup to End of Drum
66864F	UQ		16.50	7.00	10.62	8.78	9.84
69537B	QX*		16.50	7.00	10.41	8.78	9.88
69996B	QQ**		16.50	7.00	10.41	8.78	9.88

* Indicates Meritor/Dayton X-30 Brake Drum

** Indicates Centrifuse® - Registered trademark of Hayes Lemmerz International, Inc.

WEBB WHEEL PRODUCTS, INC.
2310 Industrial Drive, S.W.
Cullman, Alabama 35055
256/739-6660
FAX: 256/739-6246