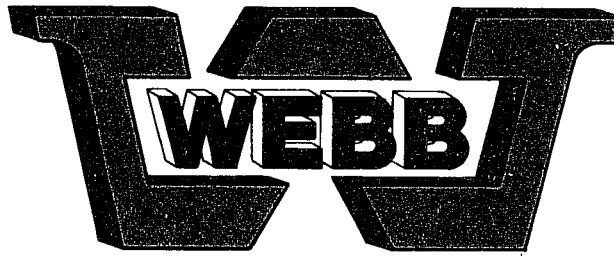


NOTE:

This bulletin replaces Bulletin No. 268 which is incorrect.



No. 268-A

Date 1/19/94

Another addition to the expanding line of Webb products.

NEW PRODUCT BULLETIN

PART NUMBER: 61590

BRAKE DRUM

SIZE: 15.00 × 7.00

AVAILABLE
NOW

ESTIMATED WEIGHT: 100 Lbs.

SERVICE RATING

STANDARD DUTY _____

HEAVY DUTY X

EXTRA HEAVY DUTY _____

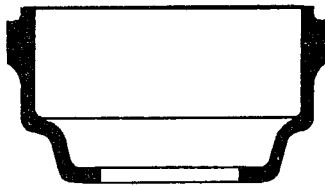
APPLICATION INFORMATION

**TRUCK DRIVE AXLE
HYDRAULIC BRAKES**

DIMENSIONAL INFORMATION

BRAKE SURFACE DIAMETER	OVER ALL DEPTH	BRAKE SURFACE FLAT	PILOT DIAMETER	BOLT CIRCLE DIAMETER	BOLT HOLES	
					NUMBER	SIZE
15.00	10.31	7.47	9.00	11.25	10	.84

TYPE L



DRUM CONFIGURATION

INTERCHANGE INFORMATION

<u>MANUFACTURER</u>	<u>PART NUMBER</u>
ROCKWELL	4219-P-4930

INTERCHANGE INFORMATION SHOWN ABOVE IS BASED ON INFORMATION AVAILABLE AT TIME OF PUBLICATION, PORTIONS OF WHICH WERE OBTAINED FROM UNCONFIRMED SOURCES. THEREFORE ACCURACY OF INTERCHANGE INFORMATION CANNOT BE ASSURED.

WEBB WHEEL PRODUCTS, INC.
2310 Industrial Drive, S.W.
Cullman, Alabama 35055
(205) 739-6660
FAX: 205-739-6246